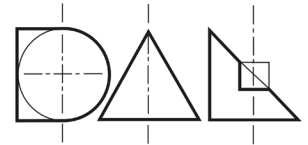


M FLUX M7 - SUMMARY

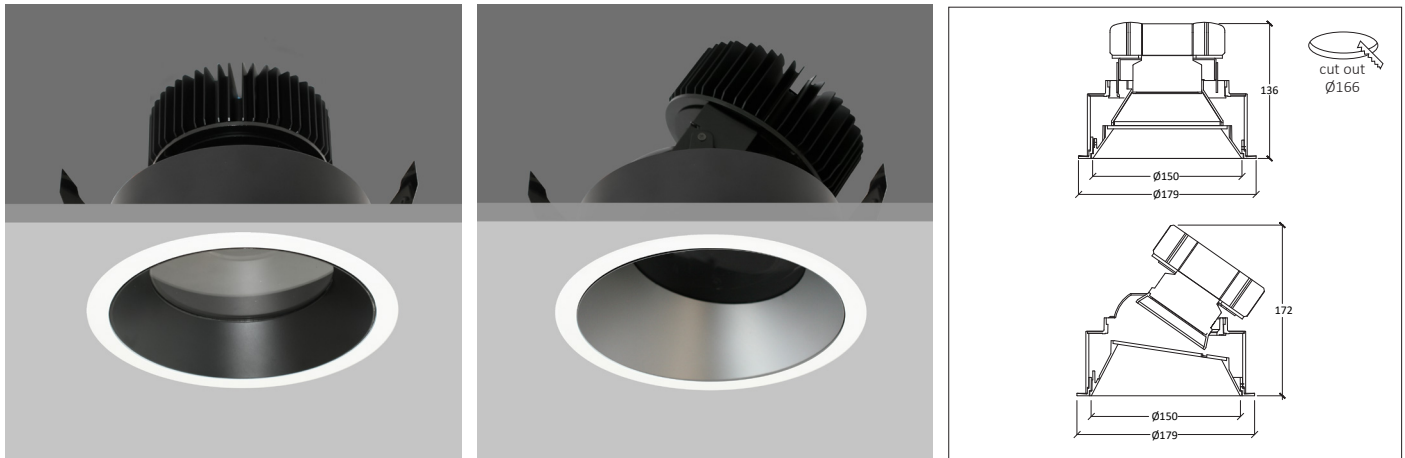


M-FLUX M7 FIXED/DIRECTIONAL Round recessed downlighter with standard white ceiling trim and a choice of deep cone reflector finish and beam distribution. The high-quality precision lens and deep cone aluminium reflector gives visual comfort. Driver mounted remotely.

The M-FLUX M7 is easy to install and incorporates the latest, high efficiency LED technology. Colour consistency through life is ensured by state-of-the-art components and passive cooling aluminium heat sinks.

Standard colour temperatures: 2700K, 3000K, 4000K, colour rendering Ra>90 2-step Macadam are all available. Life 50000 hours.

A choice of drivers provide fixed supply or dimming to project requirements. IP20/IP44/IP54 durable, high specification die-cast



LED Module	Beam Angle	Lumen Source	LED W	CCT	CRI	Macadam	IP Rating
Ultra Narrow	8°	700 lm	6W	2700K, 3000K, 4000K	>90	2 step	IP20, IP44, IP54
Narrow	10°	2000 lm	20W	2700K, 3000K, 4000K	>90	2 step	IP20, IP44, IP54
Standard	16°, 25°, 33°, 50°	2100 lm 2700 lm 3300 lm	17W 24W 33W	2700K, 3000K, 4000K	>90	2 step	IP20, IP44, IP54
High Power	23°, 32°, 40°, 52°	3100 lm 3500 lm 4000 lm 4500 lm 5000 lm	24W 28W 33W 39W 45W	2700K, 3000K, 4000K	>90	2 step	IP20, IP44, IP54
Super High Power	Medium, Wide Flood	5000 lm 5500 lm 6000 lm 6500 lm	43W 48W 56W 64W	2700K, 3000K, 4000K	>90	2 step	IP20, IP44, IP54

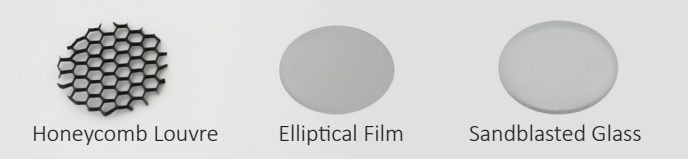
Standard Trim Finish

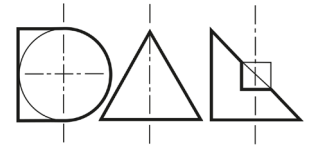


Trim Finish

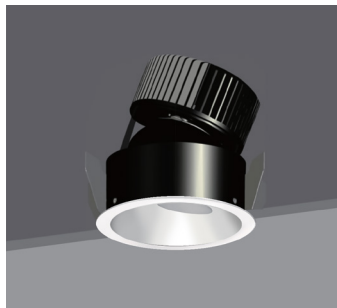


Accessories





Fixed Round



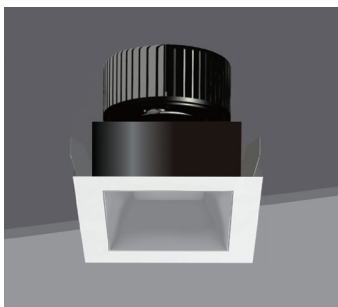
Directional Round



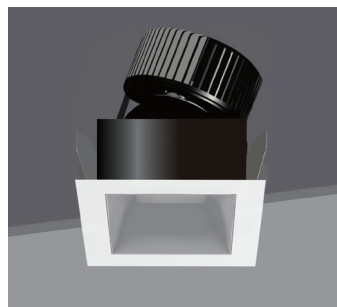
Wallwasher Round



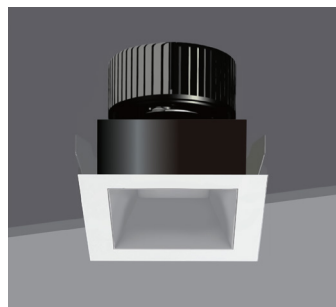
Trimless Round



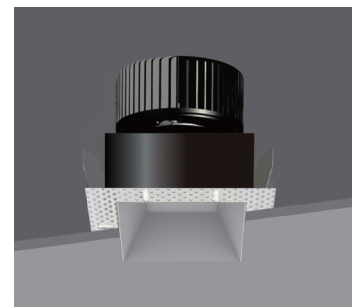
Fixed Square



Directional Square



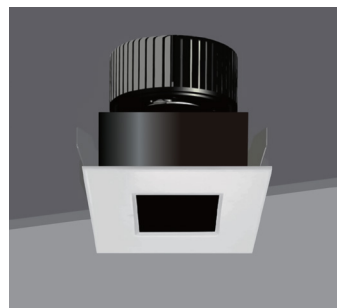
Wallwasher Square



Trimless Square



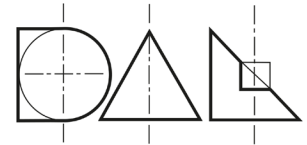
Pinhole Round



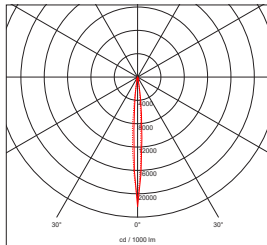
Pinhole Square

PRODUCT CODING EXAMPLE: M7F3131J350R320

Series	Type	Distribution	Reflector Colour	Initial Lumens	LED	Colour Temp	Driver Protocol	Emergency Protocol	Shape	Trim Colour	IP	Accessories
M7	F FIXED	1 1-10°	1 SPECULAR SILVER	07 700 lm	J CREE	2 2700K	0 NON DIM	0 NONE	R ROUND	L Trimless	2 IP20	0 NONE
	A ADJUSTABLE	2 11-20°	2 SATIN SILVER	20 2000 lm	CRI >90	3 3000K	1 1-10V	E EMERGENCY	S SQUARE	3 Black	4 IP44	1 HONEYCOMB
	S SINGLE	3 21-30°	3 BLACK	27 2700 lm	2 STEPS	5 4000K	5 DALI			4 White	5 IP54	2 ELLIPTICAL FILM
	D DOUBLE	4 31-40°	4 WHITE	33 3300 lm etc			7 LEAD / TRAIL					3 FROSTED GLASS
	WALLWASH	4 41-50°	5 GOLD				8 CASAMBI					
		6 51-60°	6 BRONZE				9 ADDRESSABLE (EMERGENCY)					
			7 COPPER									
M7	F	3	1	31	J	3	5	0	R	3	2	0

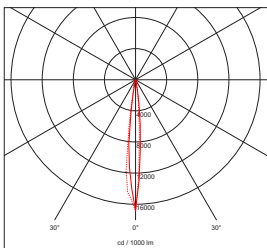


LED	Beam Angle	Lumen Source	Delivered Lumens	LOR	Luminous Intensity	Current	Forward Voltage	LED W	CRI	Macadam
Ultra Narrow Module	8°	700 lm	548 lm	≤ 78%	15860 cd	700mA	9.3V	6W	>90	2 step



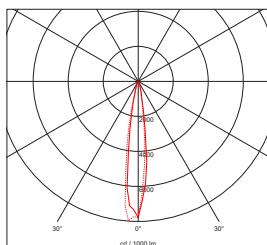
8°		700 lm
1	0.14	15853
2	0.28	3963
3	0.42	1761
4	0.56	991
5	0.70	634
H(m)	Dia (m)	E(lx)

LED	Beam Angle	Lumen Source	Delivered Lumens	LOR	Luminous Intensity	Current	Forward Voltage	LED W	CRI	Macadam
Narrow Module	10°	2000lm	1760 lm	≤ 88%	35940 cd	600mA	33.9V	20W	>90	2 step

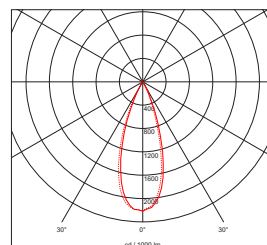


10°		2000 lm
1	0.17	35874
2	0.35	8969
3	0.52	3986
4	0.70	2242
5	0.87	1435
H(m)	Dia (m)	E(lx)

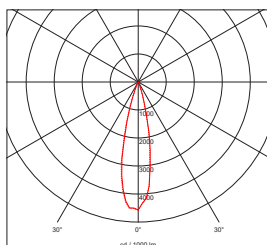
LED	Beam Angle	Lumen Source	Delivered Lumens	LOR	Luminous Intensity	Current	Forward Voltage	LED W	CRI	Macadam
Standard Module	16°	2100 lm	1638 lm	≤ 80%	16824 cd	500mA	34.3V	17W	>90	2 step
		2700 lm	2105 lm		21653 cd	700mA	35.6V	24W		
		3300 lm	2633 lm		27105 cd	900mA	36.6V	33W		
	25°	2100 lm	1755 lm	≤ 85%	9667 cd	500mA	34.3V	17W	>90	2 step
		2700 lm	2263 lm		12488 cd	700mA	35.6V	24W		
		3300 lm	2807 lm		15435 cd	900mA	36.6V	33W		
	33°	2100 lm	1696 lm	≤ 84%	4665 cd	500mA	34.3V	17W	>90	2 step
		2700 lm	2216 lm		6103 cd	700mA	35.6V	24W		
		3300 lm	2764 lm		7633 cd	900mA	36.6V	33W		
	50°	2100 lm	1507 lm	≤ 74%	2260 cd	500mA	34.3V	17W	>90	2 step
		2700 lm	1965 lm		2974 cd	700mA	35.6V	24W		
		3300 lm	2449 lm		3674 cd	900mA	36.6V	33W		



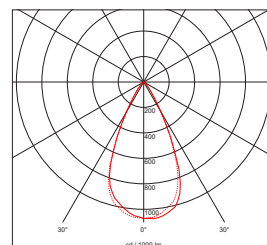
16°		2100 lm	2700 lm	3300 lm
1	0.26	16811	21613	27056
2	0.52	4203	5403	6764
3	0.77	1868	2401	3006
4	1.03	1051	1351	1691
5	1.29	673	865	1082
H(m)	Dia (m)	E(lx)	E(lx)	E(lx)



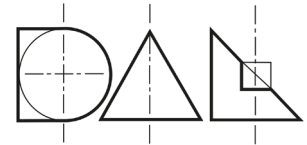
33°		2100 lm	2700 lm	3300 lm
1	0.63	4664	6100	7629
2	1.27	1166	1525	1907
3	1.91	518	678	848
4	2.55	292	381	477
5	3.18	187	244	305
H(m)	Dia (m)	E(lx)	E(lx)	E(lx)



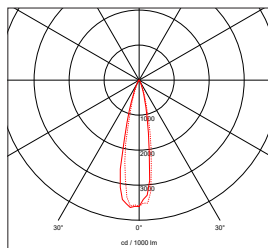
25°		2100 lm	2700 lm	3300 lm
1	0.42	9661	12482	15428
2	0.84	2415	3121	3857
3	1.26	1073	1387	1714
4	1.67	604	780	964
5	2.09	386	499	617
H(m)	Dia (m)	E(lx)	E(lx)	E(lx)



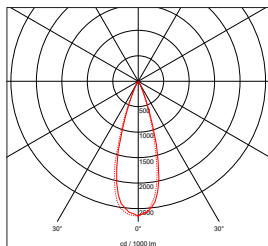
50°		2100 lm	2700 lm	3300 lm
1	0.92	2254	2939	3665
2	1.84	564	735	916
3	2.77	251	327	407
4	3.69	141	184	229
5	4.61	90	118	147
H(m)	Dia (m)	E(lx)	E(lx)	E(lx)



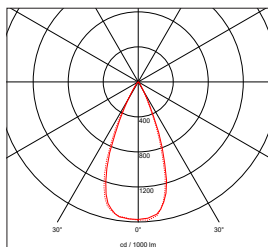
LED	Beam Angle	Lumen Source	Delivered Lumens	LOR (Up to)	Luminous Intensity	Current	Forward Voltage	LED W	CRI	Macadam
High Power Module	23°	3100 lm	2248 lm	≤ 74%	11195 cd	700mA	34.5V	24W	>90	2 step
		3500 lm	2577 lm		12845 cd	800mA	34.9V	28W		
		4000 lm	2973 lm		14827 cd	950mA	35.6V	33W		
		4500 lm	3169 lm		15768 cd	1100mA	36.1V	39W		
		5000 lm	3612 lm		17968 cd	1250mA	36.7V	45W		
	32°	3100 lm	2449 lm	≤ 82%	8231 cd	700mA	34.5V	24W	>90	2 step
		3500 lm	2851 lm		9609 cd	800mA	34.9V	28W		
		4000 lm	3240 lm		10905 cd	950mA	35.6V	33W		
		4500 lm	3427 lm		11525 cd	1100mA	36.1V	39W		
		5000 lm	3895 lm		13094 cd	1250mA	36.7V	45W		
	40°	3100 lm	2416 lm	≤ 79%	4905 cd	700mA	34.5V	24W	>90	2 step
		3500 lm	2754 lm		5590 cd	800mA	34.9V	28W		
		4000 lm	3170 lm		6438 cd	950mA	35.6V	33W		
		4500 lm	3376 lm		6865 cd	1100mA	36.1V	39W		
		5000 lm	3852 lm		7838 cd	1250mA	36.7V	45W		
	52°	3100 lm	2155 lm	≤ 70%	2886 cd	700mA	34.5V	24W	>90	2 step
		3500 lm	2431 lm		3250 cd	800mA	34.9V	28W		
		4000 lm	2786 lm		3721 cd	950mA	35.6V	33W		
		4500 lm	2995 lm		3970 cd	1100mA	36.1V	39W		
		5000 lm	3410 lm		4528 cd	1250mA	36.7V	45W		



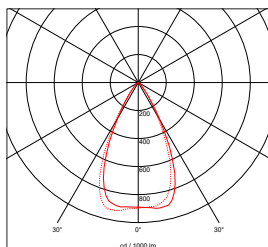
23°		3100 lm	3500 lm	4000 lm	4500 lm	5000 lm
1	0.39	11195	12842	14827	15768	17968
2	0.78	2799	3211	3707	3942	4492
3	1.18	1244	1427	1647	1752	1996
4	1.57	700	802	926	985	1123
5	1.97	448	513	593	630	718
H(m)	Dia (m)	E(lx)	E(lx)	E(lx)	E(lx)	E(lx)



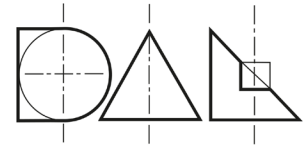
32°		3100 lm	3500 lm	4000 lm	4500 lm	5000 lm
1	0.57	8227	9605	10900	11520	13088
2	1.15	2057	2401	2725	2880	3272
3	1.72	914	1067	1211	1280	1454
4	2.30	514	600	681	720	818
5	2.87	329	384	436	461	523
H(m)	Dia (m)	E(lx)	E(lx)	E(lx)	E(lx)	E(lx)



40°		3100 lm	3500 lm	4000 lm	4500 lm	5000 lm
1	0.78	4899	5581	6427	6853	7823
2	1.56	1255	1395	1607	1713	1956
3	2.35	545	620	714	761	869
4	3.13	306	349	401	428	489
5	3.91	196	223	257	274	313
H(m)	Dia (m)	E(lx)	E(lx)	E(lx)	E(lx)	E(lx)



52°		3100 lm	3500 lm	4000 lm	4500 lm	5000 lm
1	0.98	2780	3137	3591	3816	4349
2	1.97	695	784	898	954	1087
3	2.96	309	348	399	424	438
4	3.95	174	196	224	238	272
5	4.93	111	125	143	152	174
H(m)	Dia (m)	E(lx)	E(lx)	E(lx)	E(lx)	E(lx)



LED	Beam Angle	Lumen Source	Delivered Lumens	LOR	Luminous Intensity	Current	Forward Voltage	LED W	CRI	Macadam
Super High Power Module	Medium	5000 lm				1250mA	34.4V	43W	>90	2 step
		5500 lm				1400mA	34.8V	48W		
		6000 lm				1600mA	35.2V	56W		
		6500 lm				1800mA	35.7V	64W		
	Flood	5000 lm				1250mA	34.4V	43W	>90	2 step
		5500 lm				1400mA	34.8V	48W		
		6000 lm				1600mA	35.2V	56W		
		6500 lm				1800mA	35.7V	64W		
	Wide	5000 lm				1250mA	34.4V	43W	>90	2 step
		5500 lm				1400mA	34.8V	48W		
		6000 lm				1600mA	35.2V	56W		
		6500 lm				1800mA	35.7V	64W		

(1) Height subject to the power module.

(2) Electrical Data based on 90CRI, 3000K, Tc=85°C.

(3) Tolerance range for optical and electrical data: ±10%.